

Assembly instructions

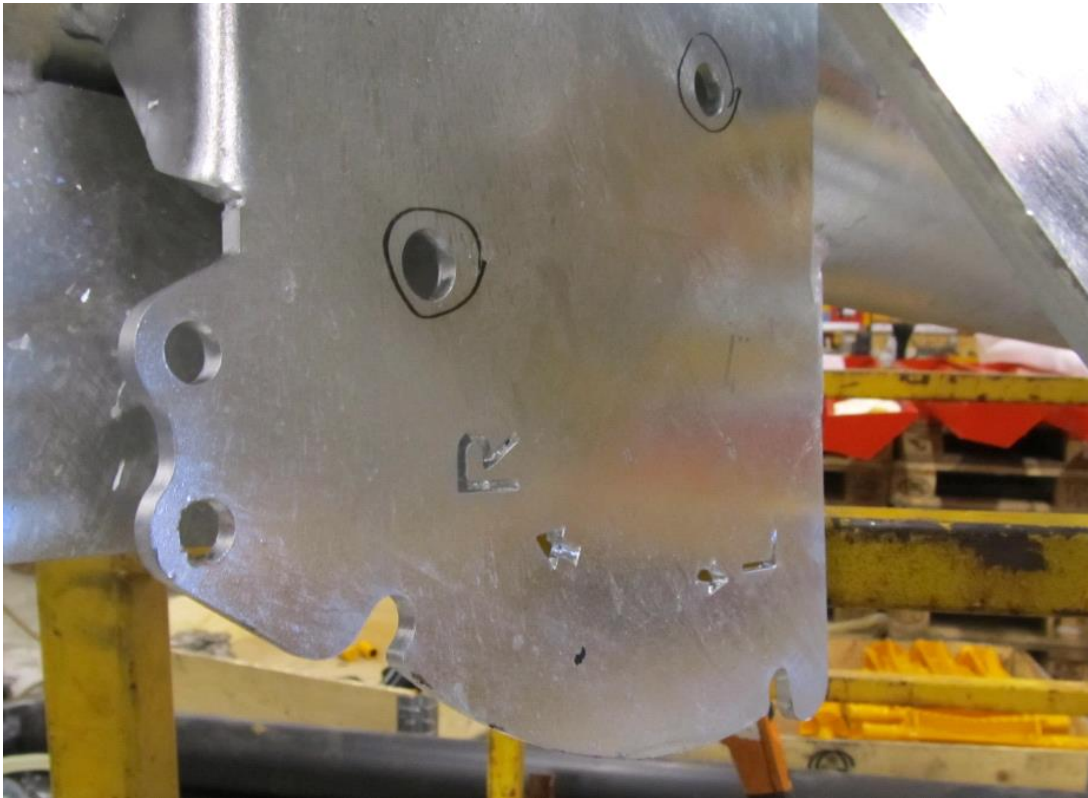
Product: SP400	Service notification number: 3125-M001	Ver: 1
-------------------	--	-----------

Hydraulic switching to loading/stirring 1312523



Parts list		
Article no.	Qty.	Designation
2427489	1	Hexagon screw M16x40 hot galvanized 8.8
2427493	2	Hexagon screw M16x50 hot galvanized 8.8
2483613	3	Locking nut m16 8.8 galvanized
2528040	1	Cotter pin 4mm 10045
2539078	2	Washer M 16 hot galvanized
2955359	1	Cylinder 40x20x050 H16H16
2957761	2	Hexagon nipple R 3/8"ext.-1/4R
2958114	2	1/4" hose R2T L-4860 HTS
1312490	1	Fastening bracket
1312491	1	Hydraulic operation load/stirring

Release the manual handle to switch between loading/stirring.



Attach the hydraulic unit in the marked holes as shown in the picture.



Attach to the rod for switching between loading/stirring.



Tighten the screws that the parts could move. Apply grease to all moving joints and sliding surfaces.

